

## Splice patch wallbox

for 72 splices and  
48 LC/24 SC port



- > Wallbox **suitable for open access** for the network level 3 indoor-termination as well as the connection of single dwelling units
- > 3-part **modular design**, consisting of housing, fiber module and cover; all components can be installed independently of each other
- > **Integrated management** for fibers and wires
- > Fiber module with pivoting patch panel, pull-out adapter holder, splice tray system, fiber management and cable feeds/outlets
- > Certified to meet the requirements of the **subsidized German fiber optic rollout** (LC/APC)

### Accessories (extract)

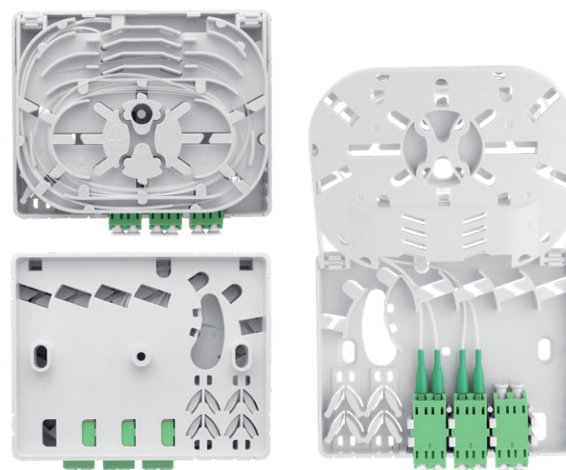
Item	Description
Adapter LC/APC	Duplex or quad adapter LC/APC with ceramic sleeve, without flange
Adapter SC/APC	Simplex adapter SC/APC with ceramic sleeve, without flange
Pigtail set LC/APC 12	Pigtail set with 12 fibers LC/APC, length 2 m, DIN color coding, 900 µm, G.657.A1 fiber
Pigtail set SC/APC 12	Pigtail set with 12 fibers SC/APC, length 2 m, DIN color coding, 900 µm, G.657.A1 fiber
Splice tray kit HS-12F	Kit, containing 6 splice trays with holder for heat-shrink splice protection for 12 fibers each

## Wall Outlet

for the FTTH subscriber  
connection at network level 5



- > Wall outlet with max. 4 ports for the fiber optic connection at the customer's premise (network level 5)
- > Stable and **appealing housing** made of white polycarbonate
- > **Pre-assembled** with SC/APC or LC/APC ports and pigtails, according the DIN color code and stored in the splice trays
- > **Cable entries on all sides** for any installation case
- > **Hinged splice tray** with integrated splice protection holder
- > Certified to meet the requirements of the **subsidized German fiber optic rollout** (LC/APC)
- > **Remote access for test purposes** by the integration option of an inline reflector



## Increase your network's WAVEPACE!

Innovative, cost-optimized and highly  
flexible FTTX solutions for every  
network level.

Your WAVEPACE® sales partner:

**braun teleCom**  
Quality on Line.

**braun teleCom GmbH**  
Merkurstr. 3 c  
30419 Hanover, Germany  
Phone +49 511 757086  
info@brauntelecom.de  
www.brauntelecom.com

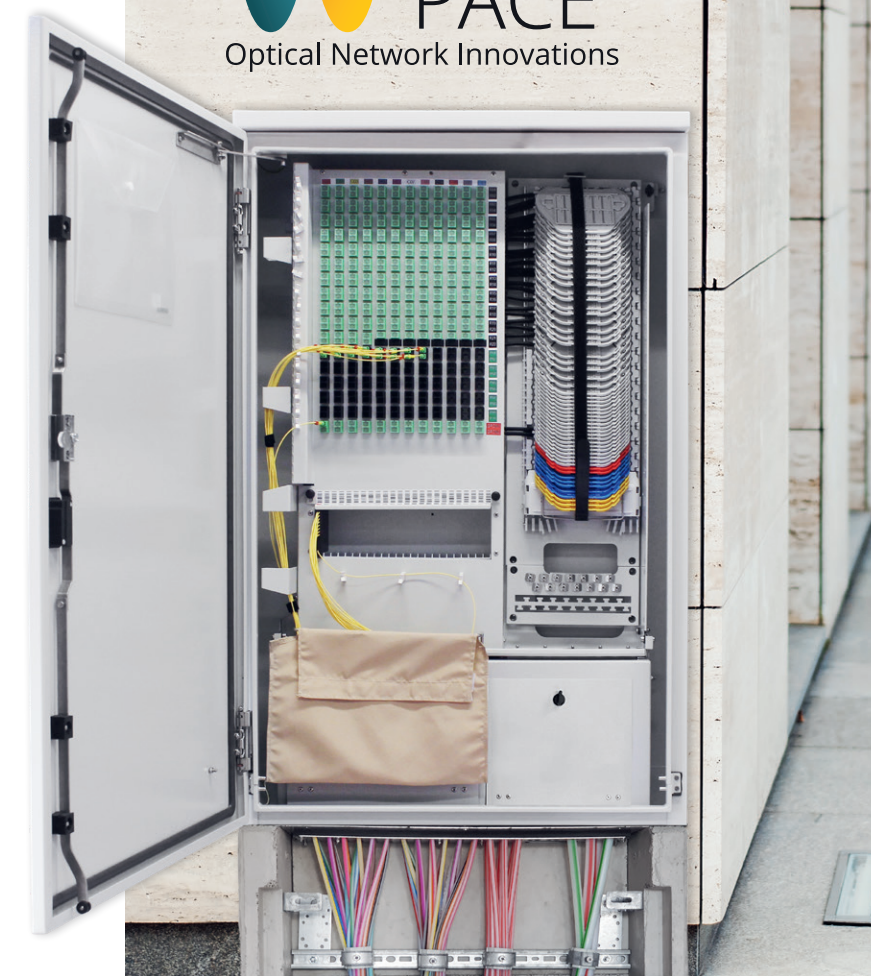
Please find further information about  
WAVEPACE®products at [www.wavepace.com](http://www.wavepace.com)



**WAVE  
PACE**  
Optical Network Innovations

# WAVEPACE® Product Overview

**WAVE  
PACE**  
Optical Network Innovations





# ODF-System

Optical Distribution  
Frame system solution



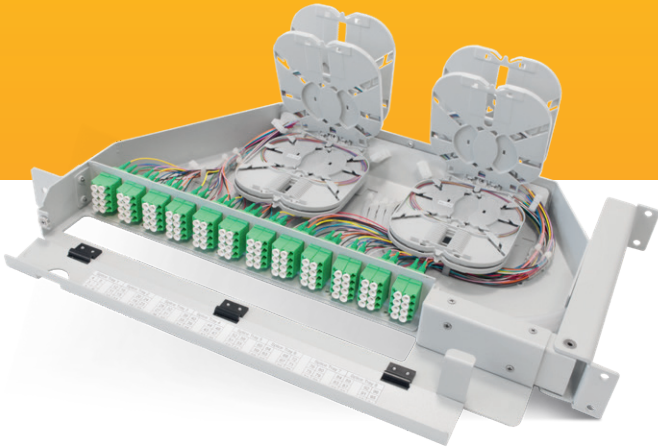
- > **Stable distribution cabinet** as a complete unit for termination and distribution of fiber optic technology
- > Optimized for **pure front access**
- > Designed for **all installation types**
- > **Optimized 19" front and rear mounting rails** for installing the panel system solutions for free access
- > Easy to use, logical cable routing and support
- > Guiding element for protective tubes at the inside of the rear wall on each RU
- > **Ventilation option** for accommodating **active 19" components** through side elements that can be removed from the inside

## Accessories (extract)

Item	Description
Fiber-Cable-Divider	Cable clamp and divider module for feeder cables Ø 7 – 12 mm using PG-gland up to 192 fibers, division to 8 x protection tube 5/3,5 mm (each 1,75 m long)

# System-Panel

Termination and distribution  
panel for the ODF-System



- > Torsion-resistant and stable panel construction
- > 19" wide panel with **unique pivot function**
- > **Pre-assembled** with up to 96 ports and pigtails according DIN color code, stored in splice trays, **ready for connection**
- > Patch field with **foldable front cover** for cable protection and documentation
- > **Integrated management** for fibers and wires
- > Up to 8 hinged splice trays at max. capacity of each 12 fibers with a 90° hinge angle for good insight and handling
- > Sufficient space between the ports for **secure individual access**

## Accessories (extract)

Item	Description
Fiber management panel	19" panel, 3 RU equipped with 3 spools

# Splice splitter patch outdoor cabinet

for point to multipoint  
networks



- > Passive **ready-to-connect** outside plant cabinet for distribution of fiber optic connections via splitters to the subscriber at network level 3
- > **Robust, application-optimized** cabinet made of powder-coated stainless steel
- > Smallest cabinet dimensions, **only 20 cm depth**
- > **High capacity:** Up to 60 cable feed options
- > **Pre-assembled** with for example 256 SC/APC adapters and pigtails

## Accessories (extract)

Item	Description
Splitter-Module 1:8	PLC-Splitter box, type SC/APC 1:8
Splitter-Module 1:16	PLC-Splitter box, type SC/APC 1:16
Splitter-Module 1:32	PLC-Splitter box, type SC/APC 1:32
Concrete-Plinth-Fiber-Cabinet	Ground plinth, lightweight concrete

# Simplex patch cords

with a G.657.A2 fiber and  
steel-armored versions



- > The WAVEPACE® high-end patch cords with diameters of 2,0 mm or 2,8 mm use the **most advanced fibers in accordance with the G.657.A2 standard** and are assembled with **high-quality Grade B connectors**.
- > Available with several cable lengths and LC/APC or SC/APC connectors from stock
- > Approved for use in **inhouse networks of Vodafone Germany** with braun teleCom as distributor
- > **Steel-armored versions** with a cable diameter of 3 mm prevent undercutting the bending radius and therefore reduce the risk of broken fibers and unnecessary service calls

