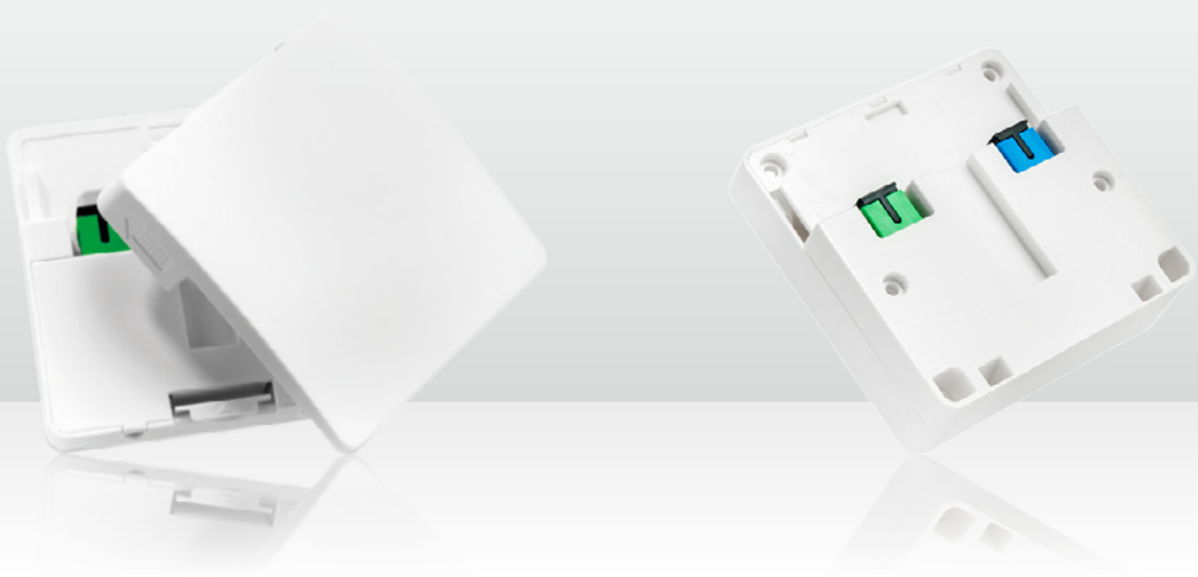




Flexible FTUs and high-performance Gateways



The most flexible FTU in the industry



Fiber Termination Units offer the operator a multi-purpose customer demarcation point

- Secure and robust end installation point for SDUs and MDUs
- Suitable for all network designs including P2P, PON, RFoG, etc.
- Suitable for single fiber (WDM) and dual fiber approach
- Usable as connection outlet for connecting (third party) external devices
- Can be equipped with a wide range of DKT's Layer 2 Gateways with or without CATV Overlay (AE, GPON, XGSPON)

What DKT's FTUs offer to the operator

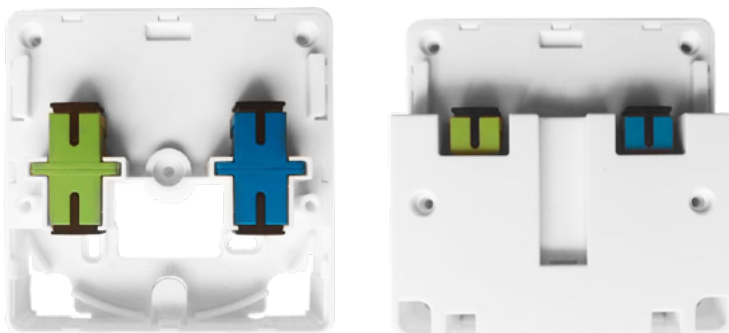
The FTU base

- Robust fiber tray incl. 2 Spliceholders
- Several mounting holes for easy installation
- Furthermore available as large version for stiffer cables (see next page)



The FTU-Dust cover

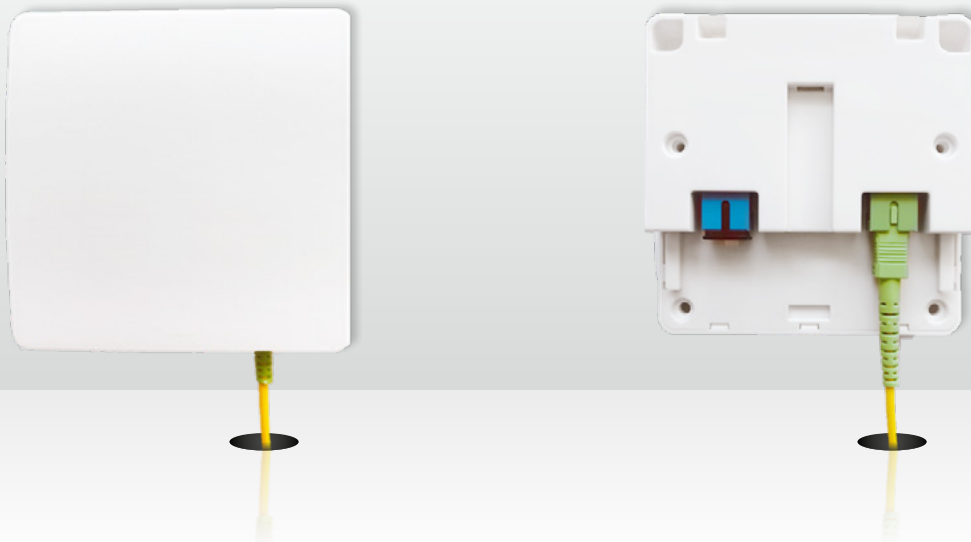
- Ensures a dust-free enclosure for the fiber connectors
- Strain relief of the attached patchcord(s)
- Customer-friendly DIY-approach



The FTU base covers

- Protecting the fiber and fiber splices
- Holds and secures the fiber adaptors (SC/APC SC/PC)
- On request, adapters including pigtailed can be supplied

The most flexible FTU in the industry



FTU configurations available

- 1 x passive FTU without pigtails, SC/PC & SC/APC adapters
- 1 x passive FTU without pigtails, SC/APC & SC/APC adapters
- 1 x passive FTU with 2 pigtails, SC/PC & SC/APC adapters
- 1 x passive FTU with 2 pigtails, SC/APC & SC/APC adapters

Further configurations available upon request!



Version for stiffer cables

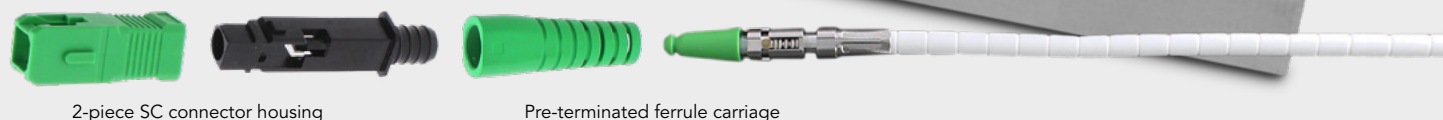
The new version of the FTU is slightly longer, creating more room in the base unit for thicker and stiffer cables to be mounted

braun teleCom pre-terminated fiber solutions

Our pre-terminated fiber solutions enable the installer to shorten the installation time significantly at the customer's premises by using pre-installed FTU demarcation points.

- Various cable lengths and packages available in disposable cartons
- Available with different types of fiber optic cables
- Only one-time access to the apartment required
- Very short installation and termination time
- Available with Mini-Flex Push-Pull cable including Quick-Fix fiber connectors for termination without splicing in the field

Mini-Flex Push-Pull cable



2-piece SC connector housing

Pre-terminated ferrule carriage

Flexibility by deploying a 2-box solution



Multiple deployment scenarios



As demarcation point for optical nodes/RFoG

As demarcation point for third-party FO gateway

As demarcation point for CATV-only

As demarcation point for Active Ethernet/GPON/XGSPON (Layer 2 "2 Box" approach)

Summary of FTU benefits

- Short installation time; only one-time access to the customer's premises needed using pre-install-kits
- Ease of installation as no in-field splicing is required
- Robust and future-proof due to the technology-independent approach which can grow with the operators future technology upgrades
- Decreased truck-roll frequency and easy maintenance

- Neutral demarcation point with maximum flexibility and lifetime supporting customer DIY concepts
- Durable and very small

All of this ensures a significant saving in OPEX & CAPEX

High-performance Gateways



Parameter	79740-1Gbps	79734-1Gbps	79741-1Gbps	79742-1Gbps	79753-1Gbps	79755-1Gbps
1 Gbps WAN	(1)	Yes	Yes	Yes	–	–
GPON WAN	–	–	–	–	Yes	Yes
1 Gbps LAN	–	1	4	4	1	4
CATV	Yes	–	–	Yes	Optional	Optional
CATV RF output [dBμV]	84	–	–	84	84	84
Switch engine ⁽²⁾	–	Yes	Yes	Yes	Yes	Yes
CATV RF filter option	–	–	–	–	Optional	Optional
SFP WAN	–	Fixed	Fixed	Fixed	Fixed	Fixed
Fiber connector	SC/APC	SC/UPC	SC/UPC	SC/UPC & SC/APC	SC/APC	–
WDM filter	–	–	Optional	Optional	–	–
Clickable FTU	Yes	Yes	Yes	Yes	Yes	Yes
TR-069	–	Yes	Yes	Yes	–	–
Dimensions with/without cover (H x D x W) [mm]	23/15 x 88 x 88					
Operating temperature range [°C]	0 ... 40					
Ethernet	–	IEEE 802.1Q VLANs (4k VLANs) incl. Q-in-Q				
	–	IEEE 802.1Q tag insertion and stripping				
	–	IGMP v1/2/3 snooping				
QoS	–	IEEE 802.1p prioritization and reclassification				
Management	–	OAM optional supporting IEEE 802.3ah, Dying Gasp, Discovery and Loopback				
	–	TR-069, including support for TR-181				
Order No.	on request					

The 1 Gbps gateway series is a unique and innovative product line that distinguishes itself by its small form factor and unique click-on interface. The small form factor, combined with ease of installation due to its click-on interface, makes the gateways an extremely flexible solution, with optimized handling and efficiency.

⁽¹⁾ Data port loop though, adapter SC/APC

⁽²⁾ Support for VLANs, Q-in-Q, QoS, IGMP, Jumbo Frames and traffic shaping and manipulation

Parameter	79751-10Gbps	79752-10Gbps	79757-10Gbps	79759-10Gbps	79761-10GEPON
10 Gbps WAN	Yes	Yes	–	–	–
XGSPON WAN	–	–	Yes	Yes	–
10G EPON WAN	–	–	–	–	Yes
1 Gbps LAN	2	2	2	2	2
10 Gbps LAN	1	1	1	1	1
10 Gbps LAN specifications	1x RJ-45, support for 10G BASE-T (also 1G/2.5G/5G) 2 LEDs: Yellow (Speed, 10 Gbps), Green (Link/Activity)				
CATV	–	Yes 85 dBμV at -5 dBm, input	–	Yes 85 dBμV at -5 dBm, input	–
Switch engine ⁽¹⁾	Yes	Yes	Yes	Yes	Yes
CATV RF filter option	–	Yes	–	Yes	–
SFP WAN	Yes	Yes	Yes	Yes	Yes
Fiber connector	SC/UPC	SC/UPC & SC/APC	SC/APC	SC/APC	SC/APC
WDM filter	–	Optional	–	Yes	–
Clickable FTU	Yes	Yes	Yes	Yes	Yes
TR-069	Yes	Yes	–	–	–
Dimensions (H x D x W) [mm]	151 x 40 x 88				
Operating temperature range [°C]	0 ... 40				
Layer 2 Ethernet	IEEE 802.1Q VLANs incl. Q-in-Q				
	IEEE 802.1Q tag insertion and stripping				
	IGMP v2/3 snooping				
Monitoring	OAM optional supporting IEEE 802.3ah, Dying Gasp, Discovery and Loopback				
Order No.	on request				

The 10 Gbps gateway series is built to fit the well proven FTU named above. The newly developed active part is based upon a sophisticated wirespeed Layer 2 switching-based "System-on-Chip" (SoC) solution.

This solution implies that fiber termination and service activation occur as part of the operator's "demarcation point" at the end customer in a FTTH 10 Gbps environment.

⁽¹⁾ Support for VLANs, Q-in-Q, QoS, IGMP, Jumbo Frames and traffic shaping and manipulation

Why is a 2-box-approach THE future-proof solution?



The development of technology is an ongoing and rapid process. New features and technologies are currently developed and deployed quickly!

A 2-box-approach offers the operator the following benefits:

- Dedicated demarcation point **minimizing OPEX** during service calls and visits
- Splits the investment cost on customer hardware (**CAPEX**) in two parts:
 - Fiber optic L2 media converter (with or without CATV-Overlay)
 - >> **Long term investment**
 - L3 In-home gateway also supports free router choice
 - >> **Mid-term investment**
- Ease of management/configuration for both the operator and user (**OPEX**)
- Supports a “**Virtual Open Network**” approach due too incorporated V-Lan/Q-in-Q-support by the FTU-Media converter
- Network upgrades can easily being performed by the user without replacing the expensive Active Optical equipment (**OPEX**)

10G Gateway
with large FTU



Do you have questions concerning our products or want to place an order?

We look forward to your call!

+49 511 757086

braun teleCom
POWERED BY  Netceed

